

Radius

Catalogue No. 30 A

INCANDESCENT LANTERNS AND LAMPS



Since we began to manufacture Lanterns and Lamps for kerosene with incandescent burners, we have been able to record a steadily increasing demand for these appliances.

This fortunate development has favoured us in devoting our attention to unremitting constructive improvements, so that the appliances listed in this Catalogue are in every respect up to the scratch and able to meet competition from any source.

AKTIEBOLAGET RADIUS
STOCKHOLM . SWEDEN

POSTAL ADDRESS:
STOCKHOLM 1

CABLE ADDRESS:
RADIUS, Stockholm

TELEGRAPH CODES:

A. B. C. 1TH & 4TH EDITION,
BENTLEY'S COMPLETE &
SECOND PHRASE, MARCONI

The code words used in this catalogue appear in Bentley's Code.

HOW THE LANTERNS FUNCTION

Below are directions for use of Radius Lantern No. 119. Other lamps mentioned in this catalogue work on the same principles.

Tie a mantle onto the mantle holder G. Unscrew filler lid D and fill tank with paraffin oil. The cock of the level indicator A floating on the paraffin oil in the tank will cause the pin on the dial to move from the zero point upwards to full. Replace filler lid and pour methylated spirits into the spirit cup B. Light the spirits, the flame of which will preheat the vapourizer F. Before the spirits are burnt up, close air screw E and pump air into the tank by means of the pump C. Thereby paraffin oil is pressed up through the bottom tube into the hot vapourizer where it is vapourized into gas, issuing out through the nipple H into the gas mixer L. Here it gets mixed with air which mixture then is forced out through the holes of the mantle holder, is lighted, and makes the mantle give a bright light.

When the nipple needs cleaning, turn the hand-wheel N one turn, causing the needle to enter the nipple, as illustrated, and to return.

If the pressure in the tank for any reason should become too high, it will cause the safety valve in the filler lid to open and let out any excessive air-pressure.

Section of
RADIUS No. 119

RADIUS LANTERNS

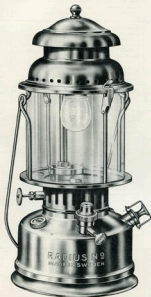
FOR KEROSENE

(Paraffin oil)

300 resp. 500

CANDLE-POWER

Perfectly stormproof.



RADIUS Lantern No. 119 has an especially efficient vaporizer which enables it to function without trouble of any kind, even in very cold and stormy weather.

As standard model this lantern is equipped with oil level indicator and glass chimney. With every lantern are supplied an automatic spirit can (except lanterns with quicklighter), spinner, and socket key for the cleaning needle, as well as a spare nipple cleaning needle, and packing for the filler lid.

The filler lid embodies a safety valve which automatically lets out any excessive pressure in the tank.

These lanterns can also be delivered with quick lighter for kerosene (paraffin oil). This quick lighter is fitted with a pressure gauge. Lanterns to be fitted with quick lighter must have a special arrangement for shutting off the fuel. Lanterns not having such an arrangement cannot be fitted with quick lighter.

Our quick lighter, its spare parts, and the spare parts for the shutting-off arrangement are specified in a supplement sheet for this catalogue.

If lanterns are wanted without quick lighter but with pressure gauge, the latter one can be fixed in the same opening on the tank as the quick lighter.

The oil level indicator shows how much paraffin oil there is in the tank. This level indicator thus goes to prevent from lighting the lantern with insufficient oil in the tank and from overflowing at filling.

At request, lanterns without oil level indicator can be supplied.

Lantern of nickel-plated brass, with oil level indicator	Number Code word	With quick lighter		119 YIGUN	119 A YIMKO
		119 YIGUN	119 A YIMKO		
Capacity of tank	Candle power	300	500	300	500
	Contents, pints	2 1/2	2 1/2	2 1/2	2 1/2
	Proper quantity for each filling, pints	1 1/2	1 1/2	1 1/2	1 1/2
	Burning time, hours	12	5 1/2	12	5 1/2
Height of lantern, inches		15	15	14 1/2	15
Weight, net, lbs.		4 1/2	4 1/2	4 1/2	4 1/2
Weight of cardboard box, lbs.		1 1/2	1 1/2	1 1/2	1 1/2
Standard packing, case of 20 lanterns	Weight, gross, per 100 pcs, lbs.	1018	1023	849	913
	Cube, outside, per 100 pcs, chti.	70	70	63	70

119		119B/30		119B/31		119B/32		119B/33		119B/34		119B/35		119B/36		119B/37		119B/38		119B/39		119B/40		119B/41		119B/42		119B/43		119B/44		119B/45		119B/46		119B/47		119B/48		119B/49		119B/50		119B/51		119B/52		119B/53		119B/54		119B/55		119B/56		119B/57		119B/58		119B/59		119B/60		119B/61		119B/62		119B/63		119B/64		119B/65		119B/66		119B/67		119B/68		119B/69		119B/70		119B/71		119B/72		119B/73		119B/74		119B/75		119B/76		119B/77		119B/78		119B/79		119B/80		119B/81		119B/82		119B/83		119B/84		119B/85		119B/86		119B/87		119B/88		119B/89		119B/90		119B/91		119B/92		119B/93		119B/94		119B/95		119B/96		119B/97		119B/98		119B/99		119B/100		119B/101		119B/102		119B/103		119B/104		119B/105		119B/106		119B/107		119B/108		119B/109		119B/110		119B/111		119B/112		119B/113		119B/114		119B/115		119B/116		119B/117		119B/118		119B/119		119B/120		119B/121		119B/122		119B/123		119B/124		119B/125		119B/126		119B/127		119B/128		119B/129		119B/130		119B/131		119B/132		119B/133		119B/134		119B/135		119B/136		119B/137		119B/138		119B/139		119B/140		119B/141		119B/142		119B/143		119B/144		119B/145		119B/146		119B/147		119B/148		119B/149		119B/150		119B/151		119B/152		119B/153		119B/154		119B/155		119B/156		119B/157		119B/158		119B/159		119B/160		119B/161		119B/162		119B/163		119B/164		119B/165		119B/166		119B/167		119B/168		119B/169		119B/170		119B/171		119B/172		119B/173		119B/174		119B/175		119B/176		119B/177		119B/178		119B/179		119B/180		119B/181		119B/182		119B/183		119B/184		119B/185		119B/186		119B/187		119B/188		119B/189		119B/190		119B/191		119B/192		119B/193		119B/194		119B/195		119B/196		119B/197		119B/198		119B/199		119B/200		119B/201		119B/202		119B/203		119B/204		119B/205		119B/206		119B/207		119B/208		119B/209		119B/210		119B/211		119B/212		119B/213		119B/214		119B/215		119B/216		119B/217		119B/218		119B/219		119B/220		119B/221		119B/222		119B/223		119B/224		119B/225		119B/226		119B/227		119B/228		119B/229		119B/230		119B/231		119B/232		119B/233		119B/234		119B/235		119B/236		119B/237		119B/238		119B/239		119B/240		119B/241		119B/242		119B/243		119B/244		119B/245		119B/246		119B/247		119B/248		119B/249		119B/250		119B/251		119B/252		119B/253		119B/254		119B/255		119B/256		119B/257		119B/258		119B/259		119B/260		119B/261		119B/262		119B/263		119B/264		119B/265		119B/266		119B/267		119B/268		119B/269		119B/270		119B/271		119B/272		119B/273		119B/274		119B/275		119B/276		119B/277		119B/278		119B/279		119B/280		119B/281		119B/282		119B/283		119B/284		119B/285		119B/286		119B/287		119B/288		119B/289		119B/290		119B/291		119B/292		119B/293		119B/294		119B/295		119B/296		119B/297		119B/298		119B/299		119B/300		119B/301		119B/302		119B/303		119B/304		119B/305		119B/306		119B/307		119B/308		119B/309		119B/310		119B/311		119B/312		119B/313		119B/314		119B/315		119B/316		119B/317		119B/318		119B/319		119B/320		119B/321		119B/322		119B/323		119B/324		119B/325		119B/326		119B/327		119B/328		119B/329		119B/330		119B/331		119B/332		119B/333		119B/334		119B/335		119B/336		119B/337		119B/338		119B/339		119B/340		119B/341		119B/342		119B/343		119B/344		119B/345		119B/346		119B/347		119B/348		119B/349		119B/350		119B/351		119B/352		119B/353		119B/354		119B/355		119B/356		119B/357		119B/358		119B/359		119B/360		119B/361		119B/362		119B/363		119B/364		119B/365		119B/366		119B/367		119B/368		119B/369		119B/370		119B/371		119B/372		119B/373		119B/374		119B/375		119B/376		119B/377		119B/378		119B/379		119B/380		119B/381		119B/382		119B/383		119B/384		119B/385		119B/386		119B/387		119B/388		119B/389		119B/390		119B/391		119B/392		119B/393		119B/394		119B/395		119B/396		119B/397		119B/398		119B/399		119B/400		119B/401		119B/402		119B/403		119B/404		119B/405		119B/406		119B/407		119B/408		119B/409		119B/410		119B/411		119B/412		119B/413		119B/414		119B/415		119B/416		119B/417		119B/418		119B/419		119B/420		119B/421		119B/422		119B/423		119B/424		119B/425		119B/426		119B/427		119B/428		119B/429		119B/430		119B/431		119B/432		119B/433		119B/434		119B/435		119B/436		119B/437		119B/438		119B/439		119B/440		119B/441		119B/442		119B/443		119B/444		119B/445		119B/446		119B/447		119B/448		119B/449		119B/450		119B/451		119B/452		119B/453		119B/454		119B/455		119B/456		119B/457		119B/458		119B/459		119B/460		119B/461		119B/462		119B/463		119B/464		119B/465		119B/466		119B/467		119B/468		119B/469		119B/470		119B/471		119B/472		119B/473		119B/474		119B/475		119B/476		119B/477		119B/478		119B/479		119B/480		119B/481		119B/482		119B/483		119B/484		119B/485		119B/486		119B/487		119B/488		119B/489		119B/490		119B/491		119B/492		119B/493		119B/494		119B/495		119B/496		119B/497		119B/498		119B/499		119B/500		119B/501		119B/502		119B/503		119B/504		119B/505		119B/506		119B/507		119B/508		119B/509		119B/510		119B/511		119B/512		119B/513		119B/514		119B/515		119B/516		119B/517		119B/518		119B/519		119B/520		119B/521		119B/522		119B/523		119B/524		119B/525		119B/526		119B/527		119B/528		119B/529		119B/530		119B/531		119B/532		119B/533		119B/534		119B/535		119B/536		119B/537		119B/538		119B/539		119B/540		119B/541		119B/542		119B/543		119B/544		119B/545		119B/546		119B/547		119B/548		119B/549		119B/550		119B/551		119B/552		119B/553		119B/554		119B/555		119B/556		119B/557		119B/558		119B/559		119B/560		119B/561		119B/562		119B/563		119B/564		119B/565		119B/566		119B/567		119B/568		119B/569		119B/570		119B/571		119B/572		119B/573		119B/574		119B/575		119B/576		119B/577		119B/578		119B/579		119B/580		119B/581		119B/582		119B/583		119B/584		119B/585		119B/586		119B/587		119B/588		119B/589		119B/590		119B/591		119B/592		119B/593		119B/594		119B/595		119B/596		119B/597		119B/598		119B/599		119B/600		119B/601		119B/602		119B/603		119B/604		119B/605		119B/606		119B/607		119B/608		119B/609		119B/610		119B/611		119B/612		119B/613		119B/614		119B/615		119B/616		119B/617		119B/618		119B/619		119B/620		119B/621		119B/622		119B/623		119B/624		119B/625		119B/626		119B/627		119B/628		119B/629		119B/630		119B/631		119B/632		119B/633		119B/634		119B/635		119B/636		119B/637		119B/638		119B/639		119B/640		119B/641		119B/642		119B/643		119B/644		119B/645		119B/646		119B/647		119B/648		119B/649		119B/650		119B/651		119B/652		119B/653		119B/654		119B/655		119B/656		119B/657		119B/658		119B/659		119B/660		119B/661		119B/662		119B/663		119B/664		119B/665		119B/666		119B/667		119B/668		119B/669		119B/670		119B/671		119B/672		119B/673		119B/674		119B/675		119B/676		119B/677		119B/678		119B/679		119B/680		119B/681		119B/682		119B/683		119B/684		119B/685		119B/686		119B/687		119B/688		119B/689		119B/690		119B/691		119B/692		119B/693		119B/694		119B/695		119B/696		119B/697		119B/698		119B/699		119B/700		119B/701		119B/702		119B/703		119B/704		119B/705		119B/706		119B/707		119B/708		119B/709		119B/710		119B/711		119B/712		119B/713		119B/714		119B/715		119B/716		119B/717		119B/718		119B/719		119B/720		119B/721		119B/722		119B/723		119B/724		119B/725		119B/726		119B/727		119B/728		119B/729		119B/730		119B/731		119B/732		119B/733		119B/734		119B/735		119B/736		119B/737		119B/738		119B/739		119B/740		119B/741		119B/742		119B/743		119B/744		119B/745		119B/746		119B/747		119B/748		119B/749		119B/750		119B/751		119B/752		119B/753		119B/754		119B/755		119B/756		119B/757		119B/758		119B/759		119B/760		119B/761		119B/762		119B/763		119B/764		119B/765		119B/766		119B/767		119B/768		119B/769		119B/770		119B/771		119B/772		119B/773		119B/774		119B/775		119B/776		119B/777		119B/778		119B/779		119B/780		119B/781		119B/782		119B/783		119B/784		119B/785		119B/786		119B/787		119B/788		119B/789		119B/790		119B/791		119B/792		119B/793		119B/794		119B/795		119B/796		119B/797		119B/798		119B/799		119B/800		119B/801		119B/802		119B/803		119B/804		119B/805		119B/806		11	
-----	--	---------	--	---------	--	---------	--	---------	--	---------	--	---------	--	---------	--	---------	--	---------	--	---------	--	---------	--	---------	--	---------	--	---------	--	---------	--	---------	--	---------	--	---------	--	---------	--	---------	--	---------	--	---------	--	---------	--	---------	--	---------	--	---------	--	---------	--	---------	--	---------	--	---------	--	---------	--	---------	--	---------	--	---------	--	---------	--	---------	--	---------	--	---------	--	---------	--	---------	--	---------	--	---------	--	---------	--	---------	--	---------	--	---------	--	---------	--	---------	--	---------	--	---------	--	---------	--	---------	--	---------	--	---------	--	---------	--	---------	--	---------	--	---------	--	---------	--	---------	--	---------	--	---------	--	---------	--	---------	--	---------	--	---------	--	---------	--	---------	--	---------	--	---------	--	----------	--	----------	--	----------	--	----------	--	----------	--	----------	--	----------	--	----------	--	----------	--	----------	--	----------	--	----------	--	----------	--	----------	--	----------	--	----------	--	----------	--	----------	--	----------	--	----------	--	----------	--	----------	--	----------	--	----------	--	----------	--	----------	--	----------	--	----------	--	----------	--	----------	--	----------	--	----------	--	----------	--	----------	--	----------	--	----------	--	----------	--	----------	--	----------	--	----------	--	----------	--	----------	--	----------	--	----------	--	----------	--	----------	--	----------	--	----------	--	----------	--	----------	--	----------	--	----------	--	----------	--	----------	--	----------	--	----------	--	----------	--	----------	--	----------	--	----------	--	----------	--	----------	--	----------	--	----------	--	----------	--	----------	--	----------	--	----------	--	----------	--	----------	--	----------	--	----------	--	----------	--	----------	--	----------	--	----------	--	----------	--	----------	--	----------	--	----------	--	----------	--	----------	--	----------	--	----------	--	----------	--	----------	--	----------	--	----------	--	----------	--	----------	--	----------	--	----------	--	----------	--	----------	--	----------	--	----------	--	----------	--	----------	--	----------	--	----------	--	----------	--	----------	--	----------	--	----------	--	----------	--	----------	--	----------	--	----------	--	----------	--	----------	--	----------	--	----------	--	----------	--	----------	--	----------	--	----------	--	----------	--	----------	--	----------	--	----------	--	----------	--	----------	--	----------	--	----------	--	----------	--	----------	--	----------	--	----------	--	----------	--	----------	--	----------	--	----------	--	----------	--	----------	--	----------	--	----------	--	----------	--	----------	--	----------	--	----------	--	----------	--	----------	--	----------	--	----------	--	----------	--	----------	--	----------	--	----------	--	----------	--	----------	--	----------	--	----------	--	----------	--	----------	--	----------	--	----------	--	----------	--	----------	--	----------	--	----------	--	----------	--	----------	--	----------	--	----------	--	----------	--	----------	--	----------	--	----------	--	----------	--	----------	--	----------	--	----------	--	----------	--	----------	--	----------	--	----------	--	----------	--	----------	--	----------	--	----------	--	----------	--	----------	--	----------	--	----------	--	----------	--	----------	--	----------	--	----------	--	----------	--	----------	--	----------	--	----------	--	----------	--	----------	--	----------	--	----------	--	----------	--	----------	--	----------	--	----------	--	----------	--	----------	--	----------	--	----------	--	----------	--	----------	--	----------	--	----------	--	----------	--	----------	--	----------	--	----------	--	----------	--	----------	--	----------	--	----------	--	----------	--	----------	--	----------	--	----------	--	----------	--	----------	--	----------	--	----------	--	----------	--	----------	--	----------	--	----------	--	----------	--	----------	--	----------	--	----------	--	----------	--	----------	--	----------	--	----------	--	----------	--	----------	--	----------	--	----------	--	----------	--	----------	--	----------	--	----------	--	----------	--	----------	--	----------	--	----------	--	----------	--	----------	--	----------	--	----------	--	----------	--	----------	--	----------	--	----------	--	----------	--	----------	--	----------	--	----------	--	----------	--	----------	--	----------	--	----------	--	----------	--	----------	--	----------	--	----------	--	----------	--	----------	--	----------	--	----------	--	----------	--	----------	--	----------	--	----------	--	----------	--	----------	--	----------	--	----------	--	----------	--	----------	--	----------	--	----------	--	----------	--	----------	--	----------	--	----------	--	----------	--	----------	--	----------	--	----------	--	----------	--	----------	--	----------	--	----------	--	----------	--	----------	--	----------	--	----------	--	----------	--	----------	--	----------	--	----------	--	----------	--	----------	--	----------	--	----------	--	----------	--	----------	--	----------	--	----------	--	----------	--	----------	--	----------	--	----------	--	----------	--	----------	--	----------	--	----------	--	----------	--	----------	--	----------	--	----------	--	----------	--	----------	--	----------	--	----------	--	----------	--	----------	--	----------	--	----------	--	----------	--	----------	--	----------	--	----------	--	----------	--	----------	--	----------	--	----------	--	----------	--	----------	--	----------	--	----------	--	----------	--	----------	--	----------	--	----------	--	----------	--	----------	--	----------	--	----------	--	----------	--	----------	--	----------	--	----------	--	----------	--	----------	--	----------	--	----------	--	----------	--	----------	--	----------	--	----------	--	----------	--	----------	--	----------	--	----------	--	----------	--	----------	--	----------	--	----------	--	----------	--	----------	--	----------	--	----------	--	----------	--	----------	--	----------	--	----------	--	----------	--	----------	--	----------	--	----------	--	----------	--	----------	--	----------	--	----------	--	----------	--	----------	--	----------	--	----------	--	----------	--	----------	--	----------	--	----------	--	----------	--	----------	--	----------	--	----------	--	----------	--	----------	--	----------	--	----------	--	----------	--	----------	--	----------	--	----------	--	----------	--	----------	--	----------	--	----------	--	----------	--	----------	--	----------	--	----------	--	----------	--	----------	--	----------	--	----------	--	----------	--	----------	--	----------	--	----------	--	----------	--	----------	--	----------	--	----------	--	----------	--	----------	--	----------	--	----------	--	----------	--	----------	--	----------	--	----------	--	----------	--	----------	--	----------	--	----------	--	----------	--	----------	--	----------	--	----------	--	----------	--	----------	--	----------	--	----------	--	----------	--	----------	--	----------	--	----------	--	----------	--	----------	--	----------	--	----------	--	----------	--	----------	--	----------	--	----------	--	----------	--	----------	--	----------	--	----------	--	----------	--	----------	--	----------	--	----------	--	----------	--	----------	--	----------	--	----------	--	----------	--	----------	--	----------	--	----------	--	----------	--	----------	--	----------	--	----------	--	----------	--	----------	--	----------	--	----------	--	----------	--	----------	--	----------	--	----------	--	----------	--	----------	--	----------	--	----------	--	----------	--	----------	--	----------	--	----------	--	----------	--	----------	--	----------	--	----------	--	----------	--	----------	--	----------	--	----------	--	----------	--	----------	--	----------	--	----------	--	----------	--	----------	--	----------	--	----------	--	----------	--	----------	--	----------	--	----------	--	----------	--	----------	--	----------	--	----------	--	----------	--	----------	--	----------	--	----------	--	----------	--	----------	--	----------	--	----------	--	----------	--	----------	--	----------	--	----------	--	----------	--	----------	--	----------	--	----------	--	----------	--	----------	--	----------	--	----------	--	----------	--	----------	--	----------	--	----------	--	----------	--	----------	--	----------	--	----------	--	----------	--	----------	--	----------	--	----------	--	----------	--	----------	--	----------	--	----------	--	----------	--	----------	--	----------	--	----------	--	----------	--	----------	--	----------	--	----------	--	----------	--	----------	--	----------	--	----------	--	----------	--	----------	--	----------	--	----------	--	----------	--	----------	--	----------	--	----------	--	----------	--	----------	--	----------	--	----------	--	----------	--	----------	--	----------	--	----------	--	----------	--	----------	--	----------	--	----------	--	----------	--	----------	--	----------	--	----------	--	----------	--	----------	--	----------	--	----------	--	----------	--	----------	--	----------	--	----------	--	----------	--	----------	--	----------	--	----------	--	----------	--	----------	--	----------	--	----------	--	----------	--	----------	--	----------	--	----------	--	----------	--	----------	--	----------	--	----------	--	----------	--	----------	--	----------	--	----------	--	----------	--	----------	--	----------	--	----------	--	----------	--	----------	--	----------	--	----------	--	----------	--	----------	--	----------	--	----------	--	----------	--	----------	--	----------	--	----------	--	----------	--	----------	--	----------	--	----------	--	----------	--	----------	--	----------	--	----------	--	----------	--	----------	--	----------	--	----------	--	----------	--	----------	--	----------	--	----------	--	----------	--	----------	--	----------	--	----------	--	----------	--	----------	--	----------	--	----------	--	----------	--	----------	--	----------	--	----------	--	----------	--	----------	--	----------	--	----------	--	----------	--	----------	--	----------	--	----------	--	----------	--	----------	--	----------	--	----------	--	----------	--	----------	--	----------	--	----------	--	----------	--	----------	--	----------	--	----------	--	----------	--	----------	--	----------	--	----------	--	----------	--	----------	--	----------	--	----------	--	----------	--	----------	--	----------	--	----------	--	----------	--	----------	--	----------	--	----------	--	----------	--	----------	--	----------	--	----------	--	----------	--	----------	--	----------	--	----	--



No. 143.



No. 145.



No. 146

RADIUS LAMPS FOR KEROSENE (Paraffin oil) 200 CANDLE-POWER

Lanterns Nos. 143 and 145 are equipped with glass chimneys and wire handles with windshield, making them suitable hanging lamps for outdoor use. When fitted with shade (130/35) and pearl fringe (119/64) they are also serviceable as table lamps.

Table Lamps Nos. 146 and 148 are equipped with glass globes.

These apparatus are supplied with spirit can, spanner, socket key for cleaning needle, spare nipple, cleaning needle, and packing for filler lid.

Lamps of nickel-plated brass		Number ...	143	145	146	148
		Code word	YIGHA	YIGJE	YIJUP	YIKAL
Tank	Number		21 BF	17 BF	21 BF	17 BF
	Contents, pints		1	2	1	2
	Proper quantity for each filling, pints		$\frac{1}{2}$	$2\frac{1}{2}$	$\frac{1}{2}$	$1\frac{1}{2}$
	Burning time, hours		7	15	7	15
Height of Lamp, inches			$13\frac{3}{8}$	14	$13\frac{3}{8}$	$13\frac{3}{8}$
Weight, net, lbs.			$2\frac{1}{4}$	3	$2\frac{1}{4}$	$2\frac{3}{8}$
Weight of cardboard box, lbs.			$\frac{1}{2}$	$\frac{1}{2}$	1	$1\frac{1}{4}$
Standard packing, case of 20 lamps.	Weight, gross, per 100 pcs., lbs.		354	628	639	661
	Cube, outside, per 100 pcs., cbft.		$54\frac{1}{2}$	$67\frac{1}{2}$	$62\frac{1}{2}$	$69\frac{1}{2}$



1000

SPARE PARTS

Figure 1

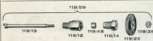
SPAREPARTS		1974-75			
		143	145	146	148
Light-burner, 1 microplated 1	No. Code word	541 544P	141 144P	132 135	152 155
Lantern frame, complete	No.	131/78	131/78	—	—
Top cover	"	130/76	130/76	130/76	130/76
Not for same	"	141/83	141/83	141/83	141/83
Glass chimney or globe	"	130/24	130/24	146/24	146/24
Misc. chimney	"	130/26	130/26	—	—



7/20/2008	1/20/2009	1/20/2009	1/20/2009	1/20/2009	1/20/2009
-----------	-----------	-----------	-----------	-----------	-----------

References

Material	QTY	130.74	130.34	130.54	130.74
Vapouriser with nipple	N/A	130.74	130.34	130.54	130.74
Nipple for vapouriser	"	130.28	130.28	130.28	130.28
Cleaning-nozzle rod	"	119.10	119.10	119.10	119.10
Cleaning-nozzle tube	"	130.05	130.05	130.05	130.05
Counter nut	"	119.32	119.32	119.32	119.32
Cleaning nozzles, 3 pcs.	"	130.87	130.87	130.87	130.87
Coupling sleeve 1/2 nozzle	"	119.09	119.09	119.09	119.09
Fitter for nozzle rod	"	119.11	119.11	119.11	119.11
Mastic holder, carburetor	"	140.31	140.31	140.31	140.31
Gas mixer	"	140.46	140.46	140.46	140.46
Nipple for gas mixer	"	130.41	130.41	130.41	130.41
Inconel-covered mastic	"	130.73	130.73	130.73	130.73
Spirit cap	"	140.06	140.06	140.06	140.06
Alumina, packing at tank	"	119.49	119.49	119.49	119.49
Isopacking at vapouriser	"	119.04	119.04	119.04	119.04
Spore lid with packing	"	21.05F	21.05F	21.05F	21.05F
Packing for same	"	21.05	21.05	21.05	21.05



Excentric bones

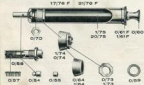
Eccentric spindle	"	119.15	119.15	119.15	119.15
Packing box	"	119.12	119.12	119.12	119.12
Pumpkin packing	"	119.48	119.48	119.48	119.48
Packing screw	"	119.14	119.14	119.14	119.14
Handwheel	"	119.25	119.12	119.22	119.27
Not too handwheel	"	119.38	119.38	119.38	119.38



01:40 P 03:40 P 01:40 P 01:40 P

Full Service

Filler screw.....	No.	21-40F	21-40F	21-40F	21-40F
Air screw.....	"	21-43F	21-43	21-43F	21-43
Filler lid with packing.....	"	21-45F	21-45F	21-45F	21-45
Rubber packing.....	"	21-46	21-46	21-46	21-46



ITEM #	QTY	UNIT PRICE	TOTAL
1	1	100.00	100.00
2	1	200.00	200.00
3	1	300.00	300.00
4	1	400.00	400.00
5	1	500.00	500.00
6	1	600.00	600.00
7	1	700.00	700.00
8	1	800.00	800.00
9	1	900.00	900.00
10	1	1000.00	1000.00
11	1	1100.00	1100.00
12	1	1200.00	1200.00
13	1	1300.00	1300.00
14	1	1400.00	1400.00
15	1	1500.00	1500.00
16	1	1600.00	1600.00
17	1	1700.00	1700.00
18	1	1800.00	1800.00
19	1	1900.00	1900.00
20	1	2000.00	2000.00
21	1	2100.00	2100.00
22	1	2200.00	2200.00
23	1	2300.00	2300.00
24	1	2400.00	2400.00
25	1	2500.00	2500.00
26	1	2600.00	2600.00
27	1	2700.00	2700.00
28	1	2800.00	2800.00
29	1	2900.00	2900.00
30	1	3000.00	3000.00
31	1	3100.00	3100.00
32	1	3200.00	3200.00
33	1	3300.00	3300.00
34	1	3400.00	3400.00
35	1	3500.00	3500.00
36	1	3600.00	3600.00
37	1	3700.00	3700.00
38	1	3800.00	3800.00
39	1	3900.00	3900.00
40	1	4000.00	4000.00
41	1	4100.00	4100.00
42	1	4200.00	4200.00
43	1	4300.00	4300.00
44	1	4400.00	4400.00
45	1	4500.00	4500.00
46	1	4600.00	4600.00
47	1	4700.00	4700.00
48	1	4800.00	4800.00
49	1	4900.00	4900.00
50	1	5000.00	5000.00
51	1	5100.00	5100.00
52	1	5200.00	5200.00
53	1	5300.00	5300.00
54	1	5400.00	5400.00
55	1	5500.00	5500.00
56	1	5600.00	5600.00
57	1	5700.00	5700.00
58	1	5800.00	5800.00
59	1	5900.00	5900.00
60	1	6000.00	6000.00
61	1	6100.00	6100.00
62	1	6200.00	6200.00
63	1	6300.00	6300.00
64	1	6400.00	6400.00
65	1	6500.00	6500.00
66	1	6600.00	6600.00
67	1	6700.00	6700.00
68	1	6800.00	6800.00
69	1	6900.00	6900.00
70	1	7000.00	7000.00
71	1	7100.00	7100.00
72	1	7200.00	7200.00
73	1	7300.00	7300.00
74	1	7400.00	7400.00
75	1	7500.00	7500.00
76	1	7600.00	7600.00
77	1	7700.00	7700.00
78	1	7800.00	7800.00
79	1	7900.00	7900.00
80	1	8000.00	8000.00
81	1	8100.00	8100.00
82	1	8200.00	8200.00
83	1	8300.00	8300.00
84	1	8400.00	8400.00
85	1	8500.00	8500

Executive Director

		21/68	17/68	21/68	17/68
Pump, complete	No	21/68	17/68	21/68	17/68
Pump rod with plunger	"	20/73	1/73	2/73	1/73
Pump-rod nut	"	0/70	0/70	0/70	0/70
Pump knob	"	0/60	0/60	0/60	0/60
Pump cap	"	0/61	1/61	0/61	1/61
Pump plunger, complete	"	0/74	1/74	0/74	1/74
Leather packing	"	0/64	1/64	0/64	1/64
Pump plunger nut	"	0/73	1/73	0/73	1/73
Pump valve, complete	"	0/58	0/58	0/58	0/58
Packing holder	"	0/44	0/44	0/44	0/44
Valve packing of cork	"	0/33	0/33	0/33	0/33
Pump valve spring	"	0/37	0/37	0/37	0/37
Lead packing for valve	"	0/39	0/39	0/39	0/39



Table 1

Accessories and Tools

	91-94	94-95	94-96	95-96
Conversion stove parts - No.				
Shade, unsmelled	170/55	170/55	170/55	170/55
Shield fringe for shade	118/66	118/66	118/66	118/66
Spanner	118/92	118/92	118/92	118/92
Key for cleaning nozzle	118/98	118/98	118/98	118/98
Spirit can, 1 pint	90/89	90/89	90/89	90/89
Spirit can, 1/2, " (118/91)	90/88	90/88	90/88	90/88
Key for pump valve	90/86	90/86	90/86	90/86



Some markets prefer our No. 119 type of Lanterns, others give preference to the models illustrated below.

Radius Lanterns of the latter type embody an improvement in being equipped with oil level indicators, but in respect of appearance, construction, and spare parts they are identical with other makes of lanterns of the same type.

Our 200 and 300 c. p. lanterns can also be delivered with quick lighter for kerosene (paraffin oil). This quick lighter is fitted with a pressure gauge. Lanterns to be fitted with quick lighter must



No. 101



No. 102



No. 103

have a special arrangement for shutting off the fuel. Lanterns not having such an arrangement cannot be fitted with quick lighter.





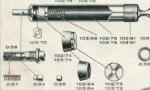

The quick lighter, its spare parts, and the spare parts for the shutting-off arrangement are specified in a supplement sheet for this catalogue.

If lanterns are wanted without quick lighter but with pressure gauge, the latter one can be fixed in the same opening on the tank as the quick lighter.

Lanterns of nickelplated brass, with oil level indicator	Number Code word	101 YILAM	102 YILEN	103 YILIF	With quick lighter	
					105 YIMYI	106 YINAF
Capacity of lanterns	Candlepower.....	100	200	300	200	300
	Contents of tank, pints.....	1 $\frac{1}{2}$	1 $\frac{1}{2}$	2 $\frac{1}{2}$	1 $\frac{1}{2}$	2 $\frac{1}{2}$
	Proper quantity for filling, pints.....	1	1 $\frac{1}{2}$	1 $\frac{1}{2}$	1 $\frac{1}{2}$	1 $\frac{1}{2}$
	Burning time, hours.....	15	18	12	18	12
Height of lantern, inches.....		11	13	19 $\frac{1}{2}$	13	15 $\frac{1}{2}$
Weight of lantern, net, lbs.....		2	3 $\frac{1}{2}$	4 $\frac{1}{2}$	3 $\frac{1}{2}$	4 $\frac{1}{2}$
Weight of cardboard box, lbs.....		$\frac{5}{8}$	$\frac{5}{8}$	1 $\frac{1}{2}$	$\frac{5}{8}$	1 $\frac{1}{2}$
Standard packing, case of 20 lanterns	Weight, gross, per 100 pcs., lbs.	418	573	860	672	1003
	Cube, outside, per 100 pcs., cu.ft.	51	45	70	45	70

N. B. These lanterns are supplied with the same extra spare parts as lanterns nos. 118-119 as specified on page 3.

SPARE PARTS FOR LANTERNS Nos. 101—103.

	Designation	Radius parts fitting lantern No.			Notes
		101	102	103	
	Screw for top cover.....	103/44	103/44	103/44	—
	Nut for same	103/38	—	—	—
	Top cover	101/21	103/21	103/21	—
	Screw for wire frame	101/23	102/23	103/23	—
	Glass chimney	101/24	102/24	103/24	74
	Vaporizer with nipple	101/34	102/34	103/34	152
	Housing for same, with packing	—	102/20	103/20	153
	Cleaning-needle rod	101/10	102/10	103/10	101
	Counter nut	103/33	103/32	103/32	102
	Cleaning needles, 3 in a pkt.	101/87	102/87	103/87	68
	Piston for needle rod	103/11	103/11	103/11	103
	Nipple	103/28	102/28	103/28	50
	Mantle holder seat	103/32	102/32	103/32	34
	Mantle holder of carborundum	103/31	140/31	113/31	3
	Gas mixer	103/46	103/46	103/46	33
	Nuts for gas mixer	103/35	102/35	103/35	—
	Incandescent mantle	101/35	130/35	114/35	4
	Spirit cup	101/08	103/08	103/08	35
	Lead packing at tank	—	103/80	103/80	90
	Eccentric, complete	103/39	103/39	103/39	114
	Eccentric spindle	103/13	103/13	103/13	105
	Packing screw	103/12	103/12	103/12	107
	Flange packing	103/30	103/30	103/30	108
	Packing box	103/14	103/14	103/14	113
	Hand-wheel	103/22	103/22	103/22	111
	Washer for hand-wheel	103/86	103/86	103/86	110
	Nut for hand-wheel	103/38	103/38	103/38	112
	Filler lid, complete with air screw and packing	103/47	103/47	103/47	5
	Packing for filler lid	103/48	103/48	103/48	11
	Pump, complete	102/76	102/76	103/76	100
	Pump rod with plunger	102/74	103/73	103/73	—
	Pump knob	103/60	103/60	103/60	80
	Pump-rod nut	103/70	103/70	103/70	87
	Leather packing	103/64	103/64	103/64	86
	Pump plunger, complete	102/74	103/74	103/74	—
	Pump-plunger nut	102/75	103/73	103/73	45
	Pump-rod spring	103/66	103/66	103/66	44
	Pump cap	102/61	102/61	103/61	42
	Pump valve, complete	0/38	0/38	0/38	10
	Packing holder	0/34	0/34	0/34	17
	Pump-valve packing of cork	0/35	0/35	0/35	16
	Pump-valve spring	0/37	0/37	0/37	18
	Lead packing for pump valve	0/39	0/39	0/39	83
	Shade, enameled	101/35	102/35	103/35	—
	Pearl fringe for shade	—	—	119/64	—
	Spanner	103/92	103/92	103/92	66
	Key for cleaning needle	103/88	103/88	103/88	119
	Spirit can, 1/2, pint	101/94	101/91	103/84	67
	" " 1 "	9039	9039	9039	—
	Pressure gauge	9060	9060	9060	62
	Key for pump valve, tempered	9026	9026	9026	126

RADIUS LANTERNS WITH QUICK-LIGHTER



Radius new quick-lighter can be used both on cooking stoves and lanterns for lighting these apparatus with their own fuel, viz. paraffin oil (kerosene). The lighter is fully described and illustrated in Radius stove catalogue No. 30, and below is a specification of lanterns carrying quick-lighters.

These lanterns are equipped with a bottom oil-valve, by means of which the supply of paraffin oil to the burner of the lantern can be shut off as required while the lighter operates. The lighter carries a pressure gauge and is screwed onto the tank nipple which otherwise used to carry the pressure gauge only in respect of ordinary lanterns without quick-lighters.

Overleaf is a specification of those spare parts for lanterns carrying quick-lighters which differ from the spares for corresponding standard models without quick-lighter.

Catalogue No.	105	106	115	118A
Code word.....	YIMYT	YINAP	YIGYN	YIMPE
Candle power	300	300	300	300
Corresponding ordinary lantern without quick-lighter	102	103	119	119A



SPARE PARTS

Spare parts for lanterns Nos.	105	106	115 115A
Spare lighter, nickel-plated, complete with pressure gauge	105/157	106/157	115/157
Parts for lighters:			
Aluminium packing	157/07	157/07	157/07
Valve packing	157/12	157/12	157/12
Nipple	157/28	157/28	157/28
Flame tube	157/31	157/31	157/31
Lead packing for pressure gauge	(0/59)	(0/59)	(0/59)
Pressure gauge	9080	9080	9080
Parts for bottom valves:			
Closing rod	105/10	106/10	105/10
Valve casing for closing rod	106/53	106/53	106/53
Packing holder	106/54	106/54	106/54
Packing	106/55	106/55	106/55
Spring	106/57	106/57	106/57
Other parts:			
Screw for wire frame	105/23	106/23	115/23
Housing for vaporizer, with packing	105/20	106/20	115/20
Cleaningneedle rod	(102/10)	(103/04)	115/10
Counter nut for cleaningneedle rod	(103/82)	(103/82)	103/82
Lead packing at tank	(103/80)	(103/80)	103/80
Piston for cleaningneedle rod	(103/11)	(103/11)	103/11
Eccentric, complete	(103/09)	(103/09)	103/09
Eccentric spindle	(103/13)	(103/13)	103/13
Packing screw for eccentric	(103/12)	(103/12)	103/12
Plumbago packing for eccentric	(103/30)	(103/30)	103/30
Packing box for eccentric	(103/14)	(103/14)	103/14
Hand-wheel for eccentric	(103/32)	(103/32)	103/32
Washer for hand-wheel	(103/86)	(103/86)	103/86
Nut for hand-wheel	(103/88)	(103/88)	103/88
Other parts for No. 105 = corresponding parts for No. 102			
" " " " 106 = " " " " 103			Vide Radius catalogue No. 30A
" " " " 115 = " " " " 119			
" " " " 115A = " " " " 119A			